

# LABORATORY

---

intelligent sustainable health ecosystem singularity

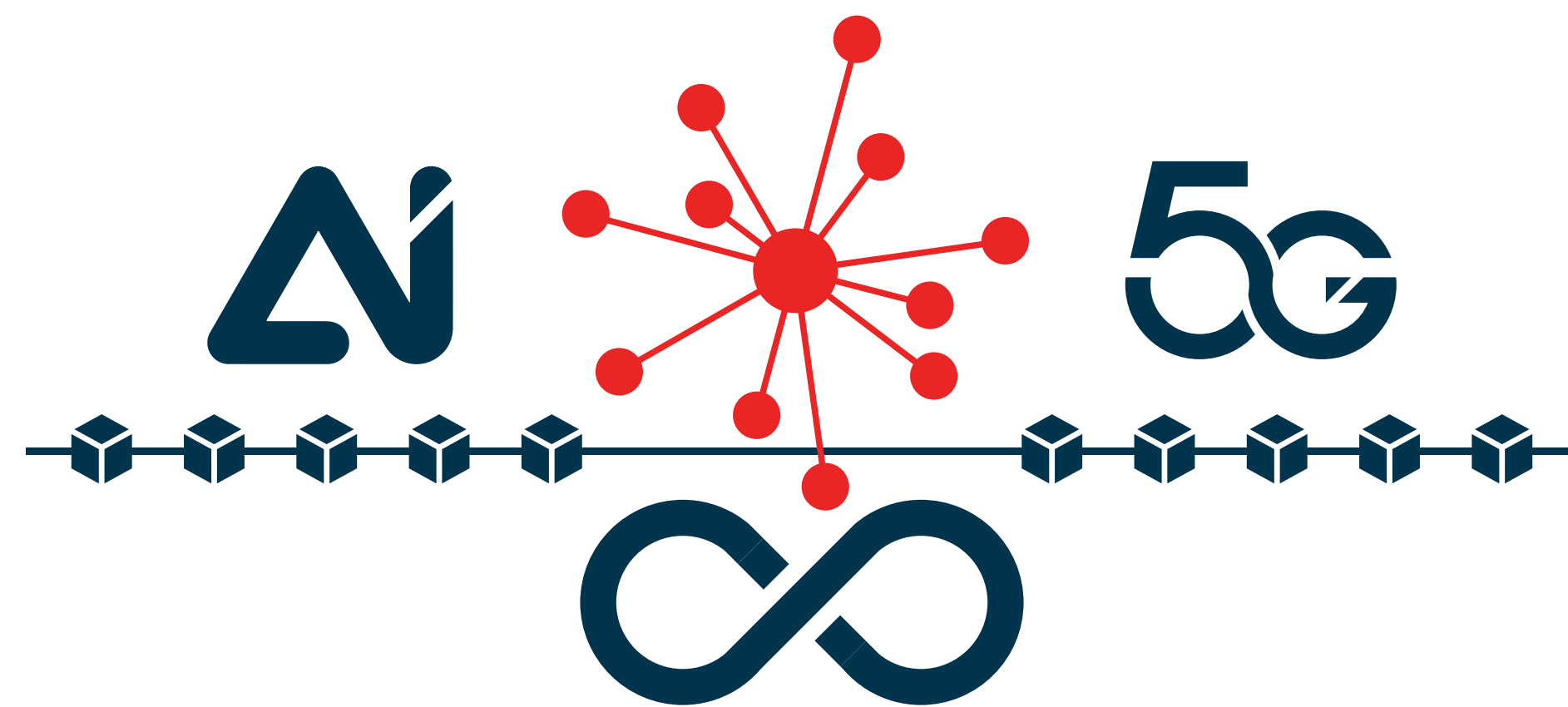
Collaborated Revenue Growth

LabEcoSys  
ECOSYSTEM  
HESS

© LABECOSYS



# the nextgen healthcare laboratory





# Laboratory-centric empowerment

LabEcoSys  
ECOSYSTEM  
THESIS

[www.LabEcoSys.com](http://www.LabEcoSys.com)

© LABECOSYS



# INTRODUCTION

Pathology laboratories, the hidden pillars of the healthcare industry, have an undeniable impact on patient care, influencing over 70% of medical decisions. Despite their critical role in healthcare delivery, these laboratories have historically been overshadowed by more visible facets of the industry, such as direct patient care or pharmaceutical advancements. However, with the emergence of disruptive technologies and the onset of a digital revolution in healthcare, these laboratories are poised for an unprecedented transformation.

In an era where technology evolves at a breath-taking pace, the integration of digital innovations into every aspect of healthcare is an inevitable reality. Amidst this wave of digitalization, the adoption of advanced technology by pathology laboratories is no longer a luxury, but a necessity for staying competitive and relevant. As our understanding of diseases expands, the demand for sophisticated diagnostic techniques and tools continues to grow, emphasizing the need for pathology labs to innovate and adapt.

This narrative highlights the emerging landscape of pathology in the digital age, highlighting the anticipated changes that disrupt-

*"... go-to-market faster with LabEcoSys Laboratory HESS ..."*

tive technologies will bring and outlining a vision for the future of these laboratories. We introduce the concept of a technology-driven, laboratory-centric health ecosystem that positions pathology laboratories at the heart of healthcare delivery. In this model, laboratories are not just reactive testing facilities, but proactive sources of health data, diagnostic insights, and critical decision-making tools.

The proposed approach relies on harnessing the power of technological advancements, such as Artificial Intelligence (AI), Machine Learning (ML), 5G, IoT, automation, and data analytics, to drive significant improvements in efficiency, accuracy, and scalability within pathology labs. At the same time, this transformation is expected to open new revenue opportunities, shifting laboratories from cost centers to value-generating entities.

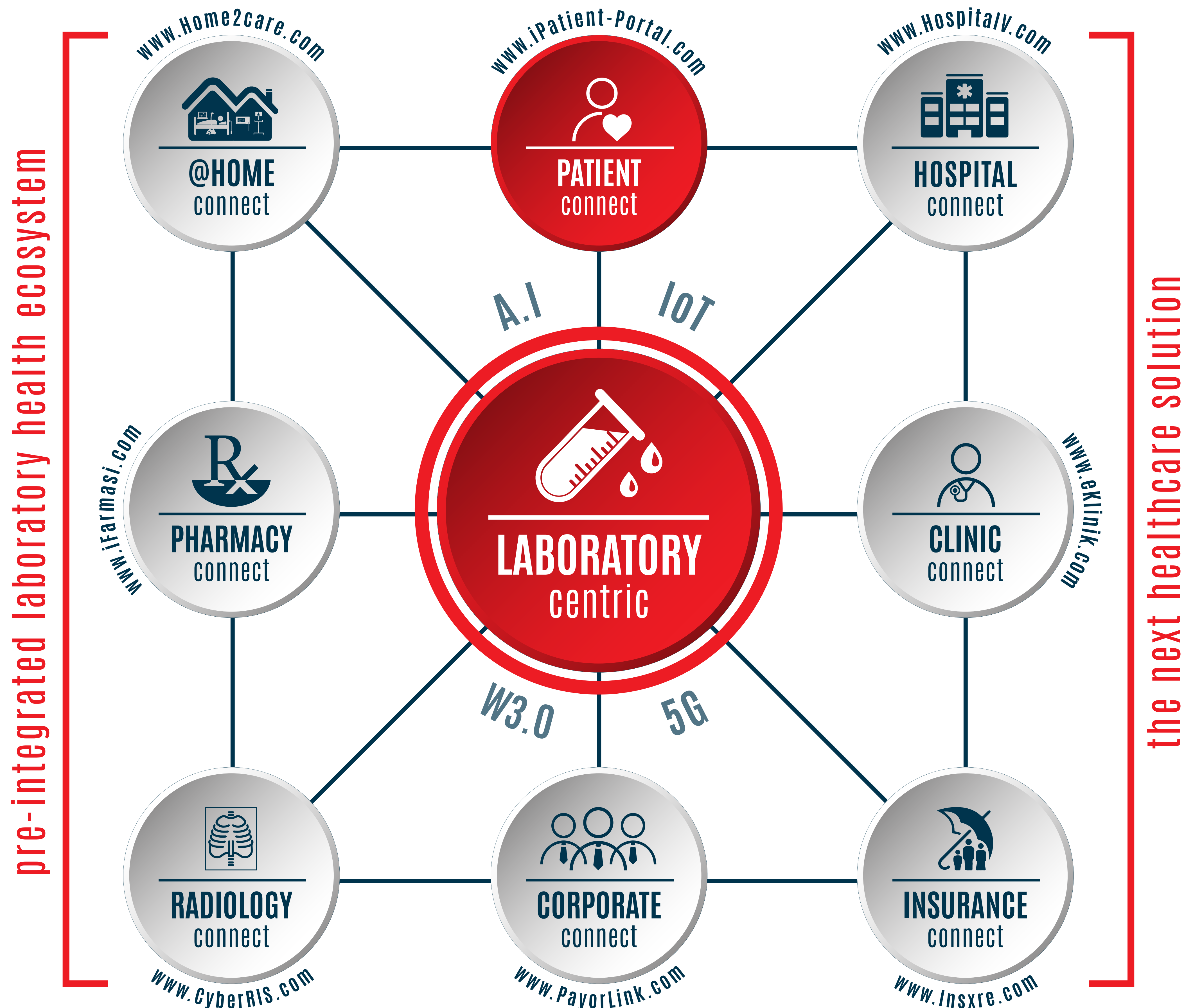
The LabEcoSys HESS health ecosystem singularity solution looks into the future of pathology, a catalyst for change, and a blueprint for laboratories to evolve into indispensable components of an innovative, digital, and patient-centric health ecosystem as a laboratory-centric healthcare disruption.

*"... begin your next healthcare journey with LabEcoSys HESS ..."*



# LABORATORY-CENTRIC

LabEcoSys Laboratory HESS



“... collaborated revenue grow when ecosystem connected ...”

[www.LabEcoSys.com](http://www.LabEcoSys.com)

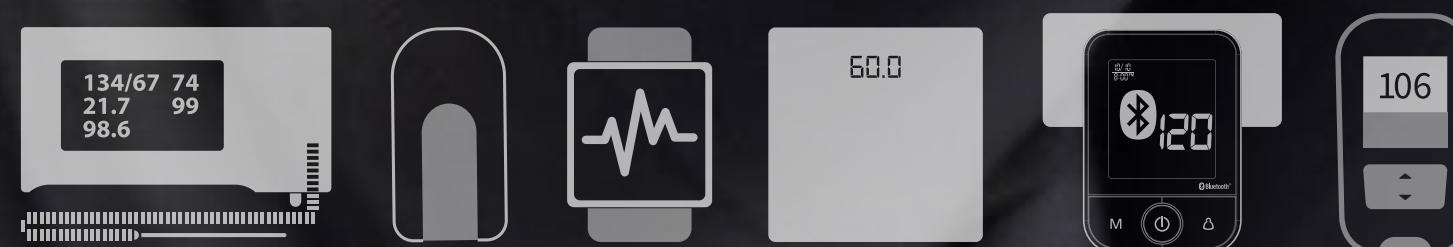
© LABECOSYS





**LABORATORY  
PATIENT  
SUPERAPP**  
Lifetime Health

A connected health ecosystem enables  
unprecedented patient-centric services

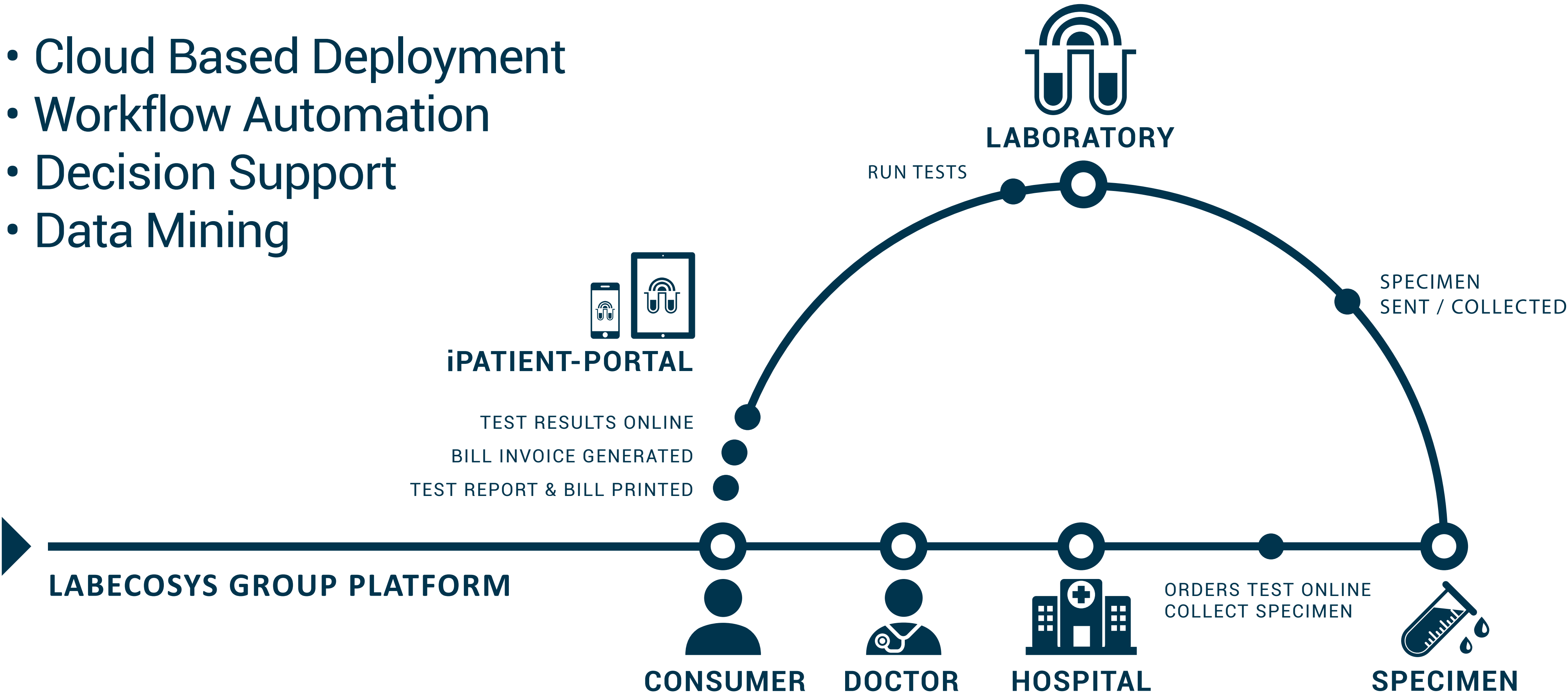




# DELIVERABLES

LabEcoSys Laboratory HESS

- Cloud Based Deployment
- Workflow Automation
- Decision Support
- Data Mining



- Appointment Scheduling
- Cashiering Billing
- Core Laboratory<sup>1</sup>
- Dashboard
- Documents
- Electronic Assay/Test Reporting
- Financial - Invoicing<sup>2</sup>
- Front Desk
- HelpDesk
- Inventory
- Pathology
- Patient Relations
- Physician Portal
- Procurement
- Specimen Management
- System Administration

## ADDON

- ePrescription Connect
- iPatient-Portal NCD Connect
- iRefer Connect
- Patient Home Care Connect
- Point Of Sale
- Quality Control
- Self-Q Connect
- TeleLaboratory Connect
- TeleMedicine Connect
- TelePathology Connect
- TeleRadiology Connect
- Vendor Information System

<sup>1</sup>HESS Connect - health ecosystem singularity solution

<sup>2</sup>InterCompany Financial Reporting; optional

<sup>3</sup>Instrument / Equipment Integration; optional



# CALL TO ACTION

LabEcoSys Laboratory HESS

LabEcoSys HESS is supplied as a interconnected health ecosystem solution on a SaaS software as a service model; for pathology laboratories, clinics, and hospitals; single, group, and healthcare consortium.

For more information, kindly contact share with us your interest that we may further discuss the possibilities:

**NEXT@IMEUS.com**

**www.IMEUS.com**





[www.LabEcoSys.com](http://www.LabEcoSys.com)